



Oklahoma County HMP – 2012 Update



All Hazards Mitigation Plan 2012 Update

For Oklahoma County and its Inclusive
Municipalities

Presented by Tetra Tech, Inc.



What is Hazard Mitigation?

*“Mitigation” -
Sustained action
taken to
reduce or eliminate
long-term risk to life
and property
from a hazard event*





Oklahoma County HMP – 2012 Update



Why are we Preparing these Plans?

- To establish a framework under which we can fulfill our highest mission – to protect our citizens
- To reduce our losses from natural hazards –
 - to make our communities more “disaster resistant”
 - to make our communities more “sustainable”
- To become eligible for federal funds for pre-disaster mitigation planning
 - Hazard Mitigation Grant Program (HMGP)
 - Pre-Disaster Mitigation Grant Program (PDM)
 - Flood Mitigation Assistance Program (FMA)



Oklahoma County HMP – 2012 Update



What does the All-Hazards Plan provide?

- A detailed action plan the county and communities will implement to reduce risk to natural hazards

“provides the blueprint for reducing the potential losses identified in the risk assessment, based on existing authorities, policies, programs and resources, and local ability...” (CFR).

- Access to Federal Mitigation grant funding (HMGP, PDM, FMA)
- Coordination of mitigation efforts with other local, county, regional, state and federal entities

A Local Mitigation Plan demonstrates a jurisdiction’s commitment to reducing risks from natural hazards and serves as a guide for decision makers as they commit resources to minimize the effects of natural hazards.



Oklahoma County HMP – 2012 Update



Who must have a “Plan” under Federal law?

- All “local governments”
 - States – Oklahoma has a “Standard” Plan
 - Counties (for county assets)
 - Municipalities (cities, towns, unincorporated areas)

The Oklahoma County Plan and Update

- Oklahoma County and 16 municipalities developed their original HMP in 2005/6.
- The Final HMP was approved by FEMA in September, 2007.
- By regulation, local HMPs must be formally updated, approved by FEMA, and adopted by all jurisdictions every 5 years.

Oklahoma County (through Emergency Management and Planning and Engineering) is facilitating the plan update process for the County and participating municipalities.



Oklahoma County HMP – 2012 Update



Why is Updating these Plans Important?

- These Plans are intended to guide and direct risk reduction activities – thus they need to stay relevant.
- Our Exposure and Vulnerability to natural hazard risk changes:
 - As nature changes
 - As man does things to increase or decrease our vulnerability
 - As our capabilities to manage risk change (knowledge about risk, funding, etc.)
- How we propose to continue to manage natural hazard risk at the County, Local and Personal levels continually needs to be monitored, assessed and adjusted.



Plan Update Process Steps

- Organize Resources
- Re-Assess the Risk
- Review and Update the Mitigation Plan
- Develop Procedures for Plan Implementation, Monitoring and Update
- ODEM / FEMA Approval
- Adopt the Plan

Engage a Wide Range of “Stakeholders”

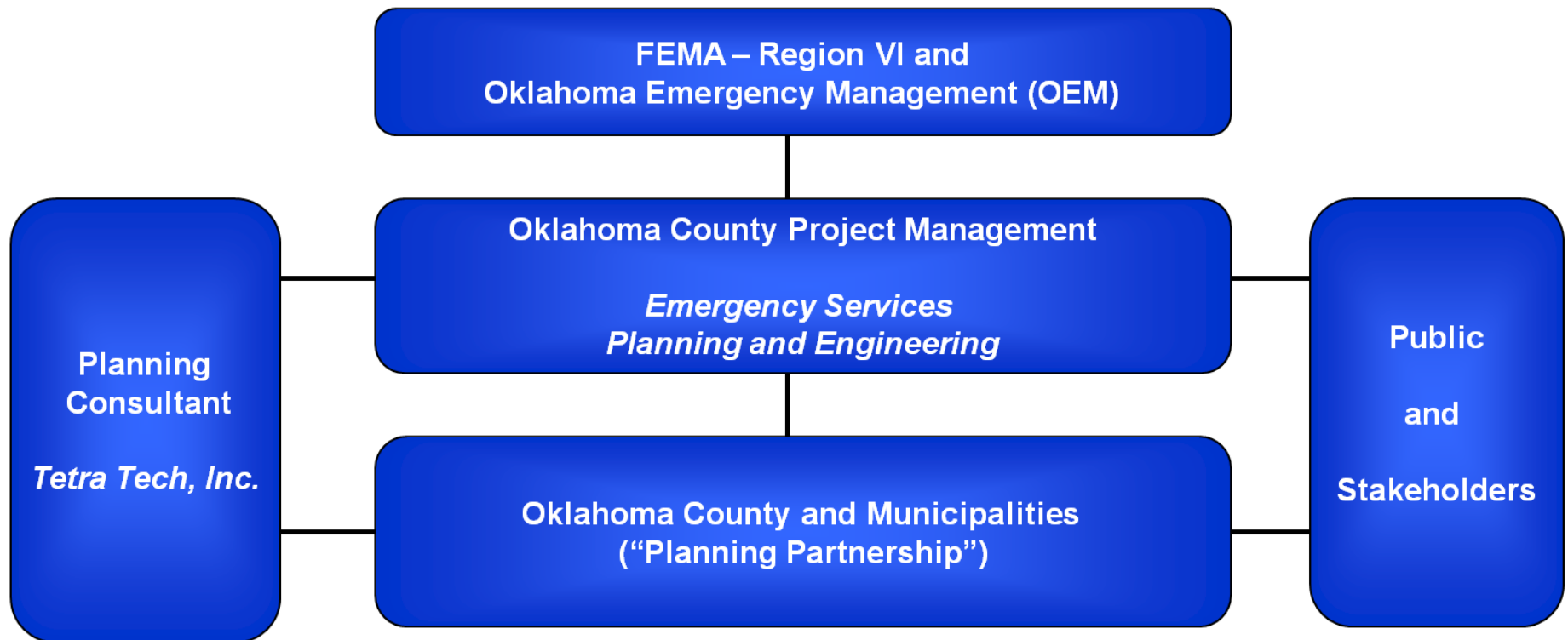
- Federal, State, Regional and Local Agencies
- Business and Civic Groups
- Academic Institutions
- Other “local governments”
- The Public



Oklahoma County HMP – 2012 Update



Organize the Resources





Oklahoma County HMP – 2012 Update



Municipal Participation

- Attend planning partnership meetings/workshops scheduled throughout the planning process (~ 5 meetings over 6 months)
- Provide data and information in a timely manner
- Support public and stakeholder outreach in your jurisdiction
- Assist with the development of your jurisdictional annex
- Review and provide feedback on Draft and Final Plan documents
- Facilitate the adoption process – Governing Body must pass an Adoption Resolution
- Implement and Maintain the Plan



Oklahoma County HMP – 2012 Update



Review of Original Plan – What needs to be updated?

In order to determine what needs to be updated, you are encouraged to review the following (available on the project Share Site) and provide your input as to what you believe needs to be included in the update:

- Oklahoma County Multi-Jurisdictional Hazards Mitigation Plan (original)
- FEMA Region VI Plan Review Crosswalk of original Plan
- Standard Hazard Mitigation Plan Update for the Great State of Oklahoma (February 17, 2011)
- Tt Plan Update Requirements document



Oklahoma County HMP – 2012 Update



Hazards of Concern (HOC)

Those hazards that pose significant risk to the Planning Area – and we can address through mitigation rather than only through preparedness, response and recovery

Original Plan Hazards

- Dam Failure
- Drought
- Earthquake
- Expansive Soils
- Extreme Heat
- Flooding
- Hail
- High Winds
- Severe Thunderstorms
- Tornado
- Wildfires
- Winter Storms

Should some hazards be deleted?

Are there other hazards that we should be considering...in the context of mitigation planning?

Is there an opportunity to group some hazards?

Please provide your thoughts on
the Municipal Information
Worksheet



Oklahoma County HMP – 2012 Update



Assess the Risk – Hazard Profiling

- Hazards are profiled (characterized) according to:
 - Background and local conditions
 - Historic frequency and probability of occurrence
 - Severity
 - Historic losses and impacts
 - Designated hazard areas
- What hazard events have occurred since the 2007 Plan (both declared and un-declared)?
- What County and Local Losses have occurred as a result of these events?

Homework:

Please complete, to the best of your ability, the Hazard Event and Loss worksheets for your community.



Oklahoma County HMP – 2012 Update



Assess the Risk - Inventory of Assets

What is at risk? People, Property, Economy, Environment

- Population and Demographics – Has this changed since 2007?
- Building Stock (Residential, Commercial, Industrial, Educational, etc.) – Has this changed since 2007?
- Critical Facilities (essential facilities, utilities, transportation features, high-potential loss facilities and user-defined facilities)

“Critical Facilities” - Standard FEMA definition:

Facilities/infrastructure that are critical to the health and welfare of the population and that are especially important following hazard events. Critical facilities include, but are not limited to, shelters, police and fire stations, and hospitals.



Oklahoma County HMP – 2012 Update



Oklahoma County
Hazard Mitigation Plan Update
Data "Wish-List"

Suggested format (if available):

GIS / Access Database

Other

Homework:

Please review the Data “Wish List” and provide the county with any such available data, particularly with respect to “Critical Facilities”.

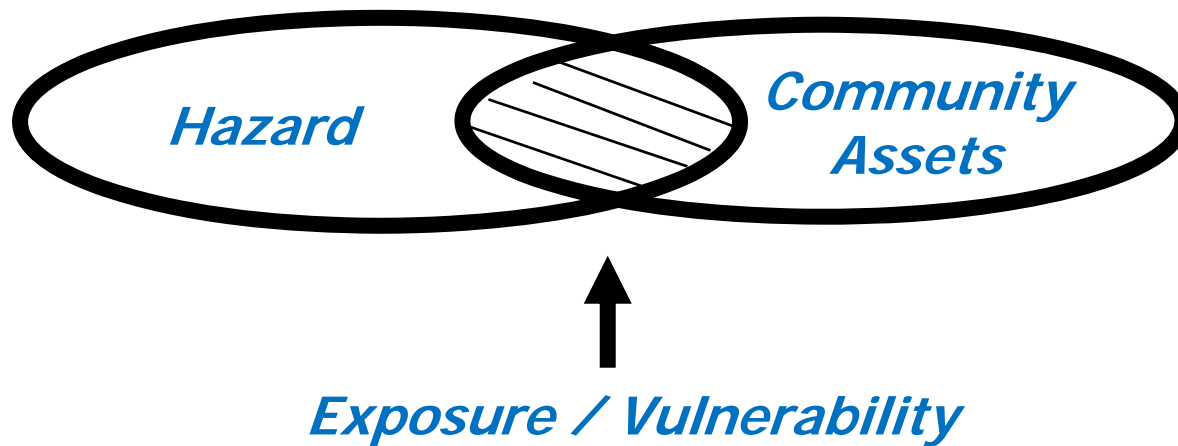
Next meeting we will be providing each community with a map and table of your Critical Facilities for your review and correction/amendment.

| | | | |
|-------------------------------|--|--------------------------|--|
| Police | | Lakes | |
| Fire | | Drainage Basins | |
| Ambulance and EMS | | Wetlands | |
| EOCs | | Reservoirs | |
| Hospitals and Medical Centers | | Dams | |
| Shelters | | Levees | |
| Schools (public and private) | | Flood control structures | |



Assess the Risk – Vulnerability Assessment

- Vulnerability Assessment - What do we predict our suffering to be if we do nothing to mitigate our risk:
 - Given current conditions, which have changed since 2007?
 - Given our improved understanding of risk, and tools to assess that risk, which have changed since 2007?





Oklahoma County HMP – 2012 Update



Update Hazard Mitigation Goals and Objectives

Goals: General guidelines that state what we want to achieve. Should be consistent with the State and other local goals.

Example: “*Protection of Life and Property*”

Objectives: Define strategies or implementation steps to attain a stated goal.

Example: “*Identify repetitive loss locations and reduce this impact on the public....*”

Actions: Specific activities that will achieve our goals and objectives and manage natural hazard risk

Collectively, the Partnership shall be reviewing and updating the Goals and Objectives – Please complete “Updating Goals...” Worksheet.

Individually, each jurisdiction shall be reviewing and updating their Mitigation Action Plan.



Oklahoma County HMP – 2012 Update



Capability Assessments

What resources do we have at our disposal to Mitigate Risk?

“Proposed mitigation actions will be evaluated against the backdrop of what is feasible in terms of your government’s legal, administrative, fiscal and technical capacities” (FEMA 386-3)

- Serve to identify legal authority and administrative, technical and fiscal capabilities in the state, county and jurisdictions that will facilitate or hinder hazard mitigation goals and objectives.
- Part of this Planning Process is to build County and Local Mitigation Capabilities to facilitate mitigation

Homework:

Please complete the Municipal Information and
Capability Assessment Worksheet.



Oklahoma County HMP – 2012 Update



Identification and Analysis of Mitigation Actions

- Mitigation actions need to be realistic, achievable and action-oriented.
- Will include both regional actions, as well as jurisdiction-specific.
- Will address both public and private property.
- For each proposed mitigation strategy, the following will be identified:
 - Implementation timeline
 - Estimated cost
 - Estimated benefits (avoided losses)
 - Potential funding sources
 - Lead agency or department
 - Supporting agencies



Oklahoma County HMP – 2012 Update



Mitigation Actions? Like What?

- **Prevention.** Measures such as planning and zoning, open space preservation, land development regulations, building codes, storm water management.
- **Property Protection.** Measures such as acquisition, relocation, storm shutters, rebuilding, barriers, flood-proofing, insurance, and structural retrofits for high winds.
- **Public Education and Awareness.** Measures such as outreach projects, real estate disclosure, hazard information centers, technical assistance.
- **Natural Resource Protection.** Measures such as erosion and sediment control, stream corridor protection, vegetative management, and wetlands preservation.
- **Emergency Services.** Measures such as hazard threat recognition, hazard warning systems, emergency response, protection of critical facilities, and health and safety maintenance.
- **Structural Projects.** Measures such as dams, levees, seawalls, bulkheads, retaining walls, channel modifications, storm sewers, and retrofitted buildings and elevated roadways.



Oklahoma County HMP – 2012 Update



Update of Local Mitigation Action Plans

- Identify progress made on mitigation actions identified in 2007 plan.
- If an action wasn't completed, why not?
- This strategy review process is NOT meant to blame or punish. The answer can reveal things that need to be addressed to allow mitigation to progress (new initiatives), for example:
 - *Obstacle: We do not have the technical resources to prepare a grant application.*
 - *Possible Action: Develop a county-level support team trained in application development.*
- What new projects, activities, initiatives would you like to add?



Other Planning Tasks

- **Assuring wide involvement and public participation**
 - Notices and new releases on planning effort
 - HMP Webpage detailing effort, providing downloadable drafts of the plan, and providing a way for public input (local contact information and email link)
 - Public presentations and meetings
 - Public access to draft and final plan documents (incl. libraries, town halls)
 - Questionnaire (on-line and/or hard copy)

- **Documentation of the Planning Process**

- **Plan implementation and maintenance procedures**

- **Adoption by local governments**



Oklahoma County HMP – 2012 Update



National Flood Insurance Program (NFIP)

| Municipality | NFIP Policies* | Coverage* | Premiums* | Participate in CRS** |
|-----------------------------|----------------|--------------|-----------|---------------------------|
| Arcadia (T - Inc.) | 7 | \$1,506,800 | \$9,243 | No |
| Bethany (City - Inc.) | 19 | \$3,597,000 | \$5,248 | No |
| Choctaw (City - Inc.) | 71 | \$14,008,000 | \$62,212 | No |
| Del City (City - Inc.) | 395 | \$41,720,900 | \$281,231 | No |
| Edmond (City - Inc.) | 317 | \$78,400,300 | \$143,365 | Yes - Class 7 (15% disc.) |
| Forest Park (T - Inc.) | 3 | \$630,000 | \$889 | No |
| Harrah (City - Inc.) | 22 | \$2,813,100 | \$14,019 | No |
| Jones (T - Inc.) | 37 | \$3,661,100 | \$23,979 | No |
| Luther (T - Inc.) | 5 | \$1,524,500 | \$6,299 | No |
| Midwest City (City - Inc.) | 262 | \$45,752,000 | \$180,022 | No |
| Nichols Hills (City - Inc.) | 17 | \$4,989,000 | \$6,112 | No |
| Nicoma Park (City - Inc.) | 8 | \$1,171,200 | \$4,349 | No |
| Spencer (City - Inc.) | 25 | \$3,510,700 | \$19,715 | No |
| The Village (City - Inc.) | 43 | \$6,219,400 | \$31,267 | No |
| Valley Brook (T - Inc.) | 1 | \$31,000 | \$312 | No |
| Warr Acres (City - Inc.) | 16 | \$3,571,900 | \$10,549 | No |

* = NFIP Statistics as of May 2011

** = CRS Participation as of Oct. 2010



Oklahoma County HMP – 2012 Update



Plan Implementation

- Your mitigation strategy section provides a “blueprint” to follow for progressively reducing your community’s natural hazard risk.
- It will include two types of initiatives/projects – those that your community can “self fund”, and those that will require outside (e.g. grant) funding.
- Mitigation grant opportunities open regularly:
 - *The annual HMA grant window opens in June of each year.*
 - *HMGP funding comes in the wake of Declared Disasters in the State.*
- Oklahoma County Emergency Management will continue to alert planning partners of grant opportunities as they arise, including all guidance and instructions provided by OEM and FEMA Region VI.



Oklahoma County HMP – 2012 Update



Why do I want to do this again? ...show me the money

- Grant applications across all mitigation programs are similar (almost identical) and can often be submitted to more than one program, and re-submitted if not awarded the first time.
- The grant process starts with a simple “Letter Of Intent” (LOI). OEM will review the LOI and advise the community whether they should move forward with their application.
- Projects often address private property (e.g. residential, commercial), however the town or county must apply on their behalf as the “sub-applicant”.
- Grants typically require a 25% local match...for private property projects, the property owner is typically responsible for fronting the 75% reimbursable portion, along with providing the 25% local match.



Oklahoma County HMP – 2012 Update



Here's how it works...

Example: Consider a \$200,000 storm water improvement project in your 5-year Capital Budget for FY13

| | <u>No Grant</u> | <u>With Grant</u> |
|----------------------------------|-----------------|---------------------|
| Base Project Cost: | \$ 200,000 | |
| Project cost with grant support: | | \$ 220,000 |
| Less 75% FEMA reimbursement: | | <u>(\$ 165,000)</u> |
| Net Project cost to Town: | \$ 200,000 | \$ 55,000 |
| Savings: | | \$ 145,000 (73%) |

...and this doesn't consider long term cost benefits



Oklahoma County HMP – 2012 Update



Plan Document

- Volume 1 will contain all information that applies to the whole planning area (all participating jurisdictions) such as description of the planning process, risk assessment, goals and objectives, multi-jurisdictional mitigation strategies and a plan maintenance program.
- Volume 2 will contain those elements that are “jurisdiction-specific”, and will include a jurisdictional annex for each participating local government within the planning area. These annexes will meet DMA requirements for each jurisdiction.
- The input each municipality shall provide throughout this Plan Update process shall be captured in their Jurisdictional Annex.



Oklahoma County HMP – 2012 Update



Home - Delaware County Hazard Mitigation Plan Update - Windows Internet Explorer

https://partners.ttemi.com/sites/delawarehmp/default.aspx

Secure, Shared Team Website

Convert Select

Favorites Web Slice Gallery

MSN.com Home - Delaware Coun...

Home RSS Print Page Safety Tools

Delaware County Hazard Mitigation Plan Update

Welcome Bianco, Cynthia

Delaware County Hazard Mitigation Plan Update

This Site

Home Site Actions

- View All Site Content
- Documents
 - Shared Documents
 - General Folder
- Lists
 - Calendar
 - Tasks
- Discussions
 - Team Discussion
- Sites
- People and Groups
- Recycle Bin

Announcements

Welcome to the Delaware County Hazard Mitigation Plan Update shared site! 7/5/2011 9:26 AM
by TT\alison.miskiman

Add new announcement

Calendar

There are currently no upcoming events. To add a new event, click "Add new event" below.

Add new event

Links

There are currently no favorite links to display. To add a new link, click "Add new link" below.

Add new link



Oklahoma County HMP – 2012 Update



General Questions, Issues and Concerns

